

Get ready to enrol and vote in the 2025 local elections.

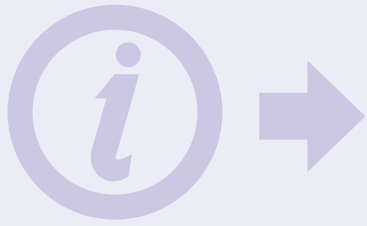


**ELECTORAL
COMMISSION**
TE KAITIAKI TAKE KŌWHIRI

Developed with input from
People First New Zealand, Ngā Tāngata Tuatahi



About this booklet



This Easy Read document talks about:

- enrolling to vote
- voting in the **2025 local elections** in Aotearoa New Zealand.



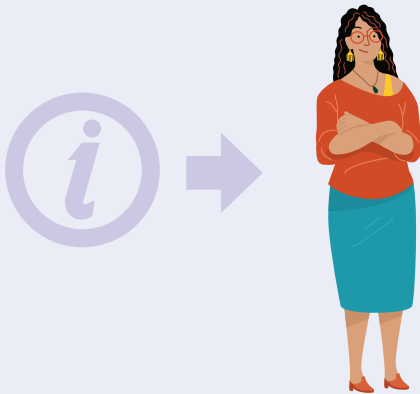
About this booklet



While this document is written in Easy Read it uses some hard words which you might not know.

Some things you can do to make it easier are:

- read a few pages at a time
- have someone support you to understand it.



This booklet has information about:

- local elections
- the Māori Electoral Option
- how to enrol to vote.



The **local elections** are when we decide who represents us and our community on our councils.

Represent means to stand / speak for someone.

About local elections



In local elections you can **vote** for the people you want to make important decisions about:

- things that affect how you live
- the city / town / region you live in.



The elections are for:

- city councils
- district councils
- regional councils.



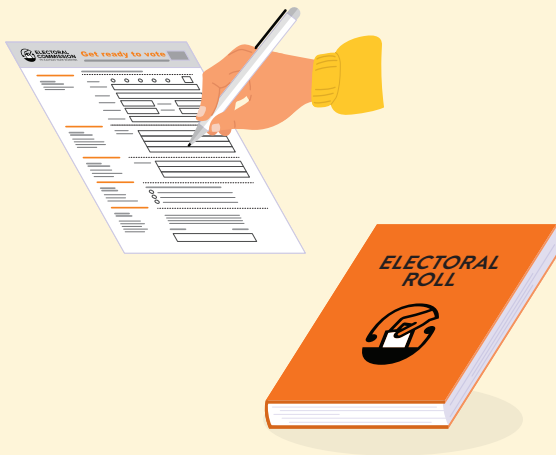
Local councils decide on things that affect your life like:

- footpaths
- street lighting
- parks
- libraries / community centres.

About local elections



You have to be enrolled to be able to **vote** in the **local elections**.



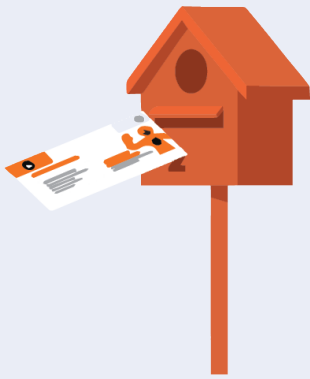
To get enrolled you have to fill in an **enrolment form**.

When you enrol your name will go on **the electoral roll**.



The **electoral roll** is the list of all the people in Aotearoa New Zealand who have **enrolled to vote**.

About the enrolment pack



Everyone on the electoral roll will be sent an enrolment update pack in the post.

This is to make sure your voting papers are sent to the right address.



The enrolment update pack will be sent from **1 April 2025**.

When you get your pack check your information is correct including your:

- **email address**
- and
- **mobile phone number.**



If they are correct you do not need to do anything.



If anything needs updating you can:

- write in the information on the form in your pack and send this back to us
- or
- update your details at **vote.nz**

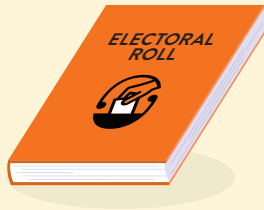
About the enrolment pack



If you do not get an enrolment pack by the end of **April** it means:

- you are **not** enrolled to vote
- or**
- your information is **not** up to date.

About enrolling to vote



To get enrolled to vote in Aotearoa New Zealand you must:

- be 18 years old or older
and
- be:
 - a **New Zealand citizen**
 - or**
 - a **New Zealand permanent resident.**



A **New Zealand citizen** is someone who can get a New Zealand passport.

Most New Zealand citizens were born in New Zealand.



A **New Zealand permanent resident** is someone who:

- is not a New Zealand citizen
- has been told by the government they can live in New Zealand as long as they want.

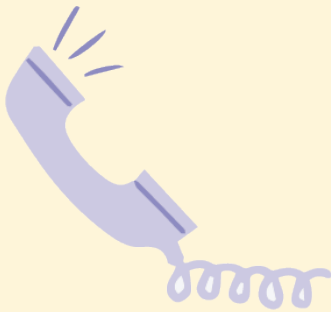
About enrolling to vote



You can enrol to vote online at **vote.nz**

To enrol online you will need to use your:

- New Zealand driver licence **or**
- New Zealand passport **or**
- **RealMe** verified identity.

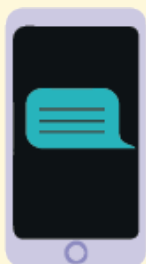


We can also send you a paper enrolment form by post.

You can call us to ask to send you a paper enrolment form on:

0800 36 76 56

It will not cost you any money to call this number.



You can also ask us to send you a paper enrolment form by texting us with your:

- name
- address.

The number to text is:

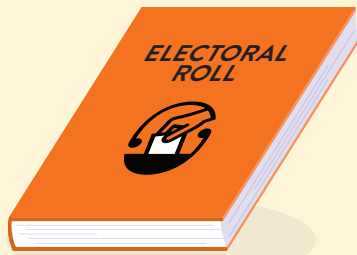
3676.

About enrolling to vote

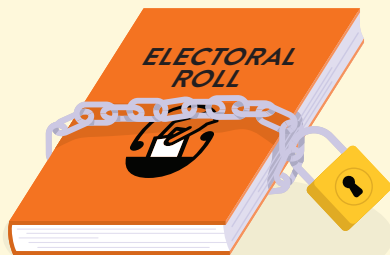


The enrolment form will ask for information about you.

It is important to put the right information on the enrolment form.



After you have enrolled to vote your name will go on the **electoral roll**.



If you are worried about your safety if your name goes on the electoral roll you can ask to go on the **unpublished roll**.

The unpublished roll is part of the electoral roll that is kept private.

This means your personal information will not be given to anyone.

About enrolling to vote



You must update your information on the electoral roll if you:

- move to a different place
- change your name.



About enrolment support



You can ask a support person to:

- support you with filling in your enrolment form
- fill in your enrolment form for you.



Your support person could be a:

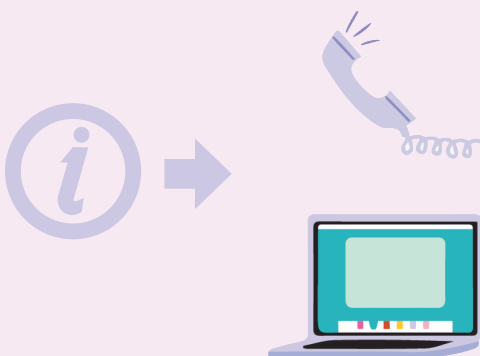
- friend
- family member.



To vote in the local elections you need to be enrolled by **1 August 2025**.

If you are not enrolled by then you will need to ask for special voting papers from your:

- local council
- electoral officer.



If you have any questions about filling in your enrolment form you can:

- call us on:
0800 36 76 56
- Email us at:
enquiries@elections.govt.nz

About electoral rolls



The **electoral roll** is split into 2 lists:

- the **Māori roll** that is open to voters who are of Māori descent
- the **general roll** that is open to all voters.

If you are of Māori descent you choose which roll you want to be on when you enrol for the first time.



You can choose if you want to be on the Māori roll or the general roll for the local elections.

No one can be on both rolls at the same time.

About electoral rolls



If you are happy with the electoral roll you are on you do not need to do anything.



If you want to change which electoral roll you are on you can do it by:

- going to the website at:
vote.nz
- filling in a paper enrolment form then sending it back to us.



About electoral rolls



You can only change which electoral roll you are on if you are Māori.

You cannot change which electoral roll you are on in the three months before a parliamentary election or the local elections.

You can usually change which electoral roll you are on at any other time.



For the 2025 local elections you can change the roll you are on up until **midnight Thursday 10 July.**



About voting in local elections



Election day is Saturday 11 October 2025.



The elections will be held by a postal vote.



That means you need to:

- fill in your voting papers
- return your vote by **midday on Saturday 11 October.**



About voting in local elections



The **local elections** are run by local councils.

They will send voting papers in the post to all voters on the electoral roll between:

- **9 September 2025**
- and
- **22 September 2025.**



If you are **not** enrolled by **1 August 2025** you will not get your voting papers sent to you in the post.

If you enrol after this date you will have to ask for **special voting papers** from your local council or electoral officer.

About voting in local elections



Special voting papers are a voting document that do not have information about you on them.

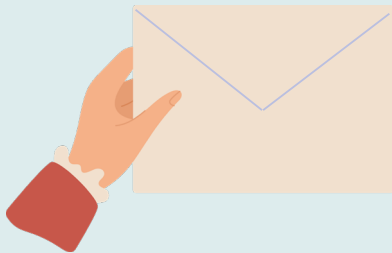
When you fill in the form you will add your information.

You might need to cast a special vote because:

- your voting papers were not delivered by

Monday 22 September 2025

- your voting papers were destroyed / lost
- a mistake was made on the voting papers and cannot be easily corrected
- you enrolled after **Friday 1 August 2025.**



About voting in local elections



The people you vote for in an election are called **candidates**.

The **candidates** with the most votes will represent you in your local council.

It is important to know that the electoral roll you choose to be on may affect which candidates you can vote for in the local elections.



Some councils have:

- Māori wards / constituencies
- and**
- general wards / constituencies.



In local elections you will vote for candidates in a Māori ward / constituency **if:**

- you choose to be on the Māori electoral roll
- and**
- your local council has a Māori ward / constituency.

About local elections



If you choose to be on the **general electoral roll** you will vote for candidates in the

general ward / constituency.

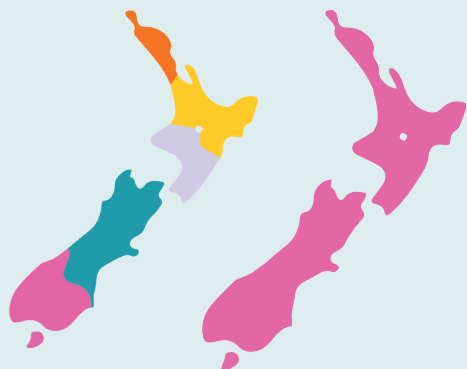
Some local councils that have Māori wards / constituencies will be holding polls at the 2025 local elections.



Polls are where Councils ask voters what they think about an issue.

The polls are to ask voters whether or not they support keeping Māori wards / constituencies.

About local elections



Local government is separate from central Government which makes decisions for all of Aotearoa New Zealand.



Local government in Aotearoa New Zealand is currently made up of:

- 11 **regional councils**
- 11 **city councils**
- 50 **district councils**
- 6 other council areas.

Regional councils look after large areas of land called **regions**.

About local elections



There are 16 regions in Aotearoa New Zealand.

Regions have voting areas called **constituencies**.



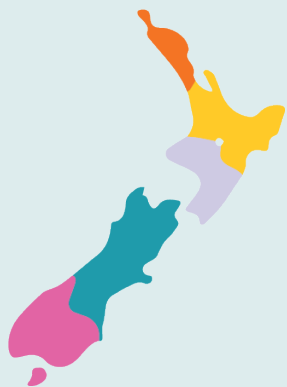
City councils look after the cities in New Zealand.



District councils look after areas that are not part of cities.

City councils / district councils have voting areas called **wards**.

About local elections



Most places in Aotearoa New Zealand are part of both:

- a region

and

- a city **or** district.



Some councils have both:

- Māori wards / constituencies
- General wards / constituencies.

In a local election you vote for people to represent the people in each ward / constituency.

These people are called **councillors**.

These voting areas:

- are not always the same size

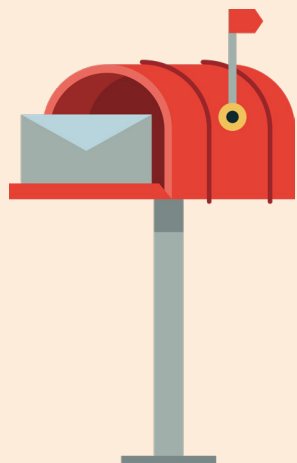
but

- usually have around the same number of people in them.



About how to cast your vote

Posting your vote



Put your completed voting papers in the envelope.

Do not include voting papers from anyone else in your envelope.

Seal the envelope and post it.

You do not have to pay to post this envelope.

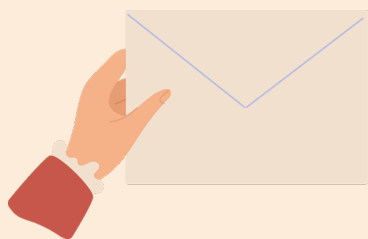
You can find a post box in your area online at:

nzpost.co.nz/tools/find-nz-post

You may also be able to hand deliver your vote.

Check with your local Council.

Hand-delivering your vote



You can also hand in your voting papers in person during the voting period. You may be able to do this at:

- council service centres
- libraries
- other places in the community.

You can find these places by looking at:

- your voting paper
- your local council website.

Where to find more information



Our websites have more information about:

- local elections
- the Māori Electoral Option
- enrolling to vote.

Our website address is:

vote.nz



You can also call us with any questions you have on:

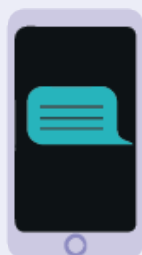
0800 36 76 56

It will not cost you money to call this number.



You can email us:

enquiries@elections.govt.nz



You can find contact details for your local Council online at:

lgnz.co.nz

You can find more information about local elections online at:

votelocal.co.nz

This information has been written by the Electoral Commission.

It has been translated into Easy Read by the Make it Easy Kia Māmā Mai service of People First New Zealand Ngā Tāngata Tuatahi.

The ideas in this document are not the ideas of People First New Zealand Ngā Tāngata Tuatahi.

