

Help spread the word

**Resources for communities to share
about the 2023 General Election**



Introduction

Election day is Saturday 14 October and voting begins on 2 October.

The Electoral Commission wants every eligible New Zealander to enrol and vote. Let's work together to make that happen.

Many New Zealanders may not know they are eligible to vote, or may have forgotten to enrol to vote, or might not think their vote will make a difference.

Help make sure your community has all the information it needs to get enrolled and voting in 2023.

This kit gives you information and links to resources you can use and share in a variety of ways – on social media, on your website, in newsletters or direct communications, or as display materials at your offices, workplaces or community centres.

We'll be adding new resources to share online as the election approaches. You can find out more at **vote.nz**. Together, we can make sure all of us get to have our say on 14 October 2023.



2023 General Election – the basics

The 2023 General Election will be held in October. Voting begins in New Zealand on **Monday 2 October**. The last day to vote is on election day **Saturday 14 October**.

Enrol to vote

You need to be enrolled to vote in the election.

You're eligible to enrol and vote if you:

- are 18 years or older, and
- a New Zealand citizen or permanent resident, and
- you've lived in New Zealand continuously for 12 months or more at some time in your life.

If you have moved house or changed your name, you need to update your enrolment details.

It's easy to enrol or update your details online at **vote.nz** using a New Zealand driver licence, New Zealand passport or RealMe verified identity.

You can also fill out an enrolment form. You can request a form at **vote.nz**, by calling **0800 36 76 56**, or by texting your name and address to **3676**.

If you haven't enrolled, you can enrol and vote at any voting place including on election day.

Voting in the General Election

Enrol by 10 September to receive information about the election in the mail as well as an EasyVote card which makes voting easier.

Information about where and when to vote, and who you can vote for, will be available from mid-September at **vote.nz** or by calling **0800 36 76 56**. It will also be included in your EasyVote pack.

If you are voting at a voting place, take your EasyVote card with you. It will make voting easier.

You can vote at any voting place in the country, but you may need to fill out an extra form if you vote outside your electorate.

You can also enrol, check or update your details at any voting place when you go to vote.

At the voting place, you'll be given a voting paper for the election. On your voting paper, place a tick by the political party you support, and a tick by the name of the person you want to represent your local area. These are your party and electorate votes.

Key Dates

Friday 14 July	Regulated period for election advertising expenses begins Māori Electoral Option exemption period begins Voters of Māori descent who are already enrolled cannot change between the Māori roll and general roll in the 3 months before the election. Māori voters enrolling for the first time can still enrol and make their roll choice during this period.
Monday 31 July	Enrolment packs sent to voters
Friday 8 September	Dissolution of Parliament
Sunday 10 September	Writ Day The Governor General issues formal direction to the Electoral Commission to hold the election. Electoral rolls close for printing. Voters enrolling after this date will need to cast a special vote.
Saturday 16 September, 2pm	Candidate information and voting place locations released Names of all electorate and list candidates released by the Electoral Commission.
Wednesday 27 September	Overseas voting starts Voters who are overseas can download their voting papers from vote.nz or vote in person at an overseas voting place. Telephone dictation voting opens
Monday 2 October	Voting opens in New Zealand Voters can enrol and vote at an advance voting place. EasyVote packs sent to voters before advance voting starts.
Friday 13 October	Advance voting ends
Friday 13 October	All election advertising must end. Signs must be taken down by midnight. Deadline to enrol from overseas
Saturday 14 October	Election day. All voting places open from 9am to 7pm. Election night. Preliminary election results released progressively from 7pm on www.electionresults.govt.nz
Friday 3 November	Official results for the 2023 General Election declared

Resources you can share

We have a wide range of resources about enrolling and voting in the 2023 General Election which are available for you to share with your community.

You can download resources and order hard copy resources to be sent to you from **vote.nz**.

You can choose from a range of display materials to put up in your workplace or community centre or to share at your next community event.

- Get ready to enrol and vote
- Concerned about your personal safety?
- Your guide to voting in the 2023 General Election
- Unable to get to a voting place
- Voting from overseas at the 2023 General Election.

An orange 3D stick figure stands on a light blue surface, holding a smartphone in its right hand. The figure has a simple face with two dots for eyes and a curved line for a mouth. A small orange dog is lying on its back on the ground in front of the figure. The background is a solid light blue.

[illegible]

Download a short message about enrolling and voting in the 2023 General Election to share in your community newsletter or on your workplace intranet.

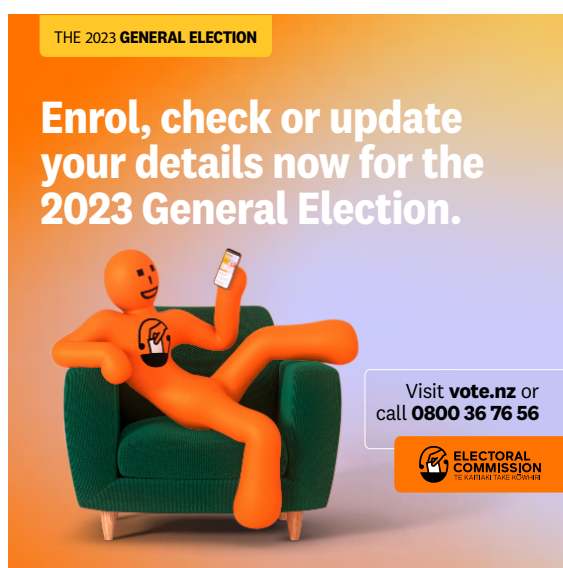
Information is available at **vote.nz**

Digital resources

Choose from a range of digital resources to share on your website or social media page or use our web banners to remind your community to enrol and vote.

We will also have tiles and suggested copy you can use for your social media posts about enrolling and voting.

Download these resources at **vote.nz**

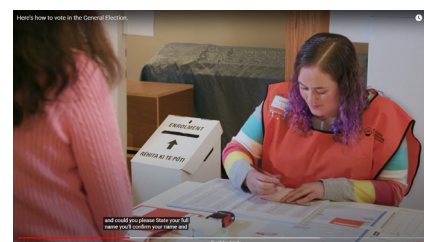
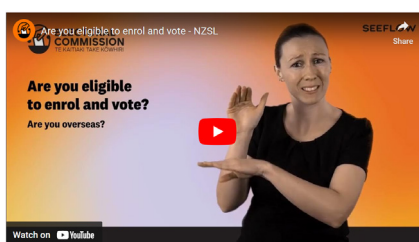
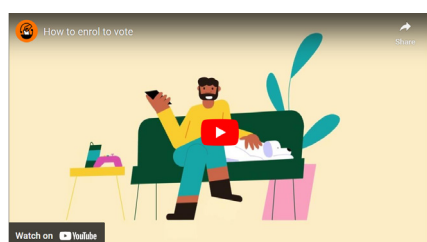


Video resources

Share short videos about how to enrol and how to vote on your social media pages or website.

We have video resources that can help enrolling and voting feel less daunting. Our short videos explain how to enrol and show what happens when you go to vote. It's quick and easy!!

The videos are available at **vote.nz**. Share them on your social media channels or add them to your website using the You Tube embed link.



Languages

Information about enrolling and voting is available in multiple languages and in Te Ātiawa, Ngā Puhi, Waikato – Tainui, Ngāti Porou, Te Arawa and Ngāi Tahu dialects.

Download or order these any of these resources at vote.nz to help your community have their say.

We want to make sure that everyone has access to the information they need to have their say in the 2023 General Election.



Why enrol to vote?

If you're enrolled to vote, you get to have a say in general elections, local elections and referendums. Elections are your chance to have a say about who represents you in the houses that you care about.

You can make sure your voice is heard by enrolling to vote.

Who can enrol to vote?

You must enrol if you:

- are 18 years or older, and
- are a New Zealand citizen or a permanent resident of New Zealand, and
- have lived in New Zealand for more than one year continuously at some time in your life.

If you are Australian, Cook Islander, Niuean or Tokelauan, you can only enrol if you have lived in New Zealand continuously for 12 months.

If you live overseas you can enrol to vote if you:

- are a New Zealand citizen who has been in New Zealand within the past three years, or
- are a permanent resident of New Zealand who has been in New Zealand within the past twelve months.

You can enrol once you turn 17. When you turn 18, you'll be automatically enrolled and you'll be ready to vote.

How do I enrol?

It's easy to enrol or update your details. You can:

- Visit vote.nz and use your New Zealand driver license, New Zealand passport or RealMe verified identity to enrol online
- Call free **0800 36 76 56** and ask for a form to be sent to you

When you've enrolled, your name will go on the electoral roll. You must be on the electoral roll to vote.

You need to update your details every time you move house.

Enrolling to vote if you are Māori

If you're of Māori descent and enrolling for the first time, you have an important choice to make. You need to decide which electoral roll you want to be on: the general roll or the Māori roll.

Your choice affects which electorate you vote in at the general election.

If you choose the general roll, you'll vote for a candidate in a general electorate. If you choose the Māori roll, you'll vote for a candidate in a Māori electorate. You can vote for the same list of political parties whichever roll you're on.

The roll you choose may affect the way you vote in local elections. If you're on the Māori roll and your local authority has a Māori ward or constituency, you'll vote for a candidate in the Māori ward.

If you change your mind once you've chosen a roll (Māori or general), you can change rolls during the Māori Electoral Option, which takes place about every 5 years.

Concerned about your personal safety?

If you're concerned about your personal safety, or that of your family, you can apply to go on the confidential unpublished roll. We'll keep your enrolment details secure and we won't give them to anyone.

Talk to your local registrar of elections, go to vote.nz or call **0800 36 76 56** for more information and an application form.

Need help to enrol?

You can ask someone you know, such as a friend or family member, or you can ask your local registrar of elections, to help you complete your enrolment form, or to complete your form for you.

You need to sign the form.

If you know someone who can't complete and sign their enrolment form because of a physical or mental impairment, you may be able to help. Go to vote.nz to find out more about helping someone enrol to vote.

Need more information?

For more information about enrolling and voting:

- Visit vote.nz
- Visit facebook.com/VoteNZ

Information about enrolling and voting is available in 27 languages at vote.nz

Me takatū ki te rēhita me te pōti.

Get ready to enrol and vote.

ELECTORAL COMMISSION
TE KAITIAKI TAKE KŌWHIRI

Alternate Formats

Information about enrolling and voting is available in a range of alternate formats for disabled people.

We want to make sure that everyone has access to the information they need to have their say in the 2023 General Election.

You can choose:

- Information about enrolling and voting in New Zealand Sign Language
- Easy Read Guide to enrolling and voting
- Information about enrolling and voting in large print and audio formats
- Information about Telephone Dictation Voting for voters with vision or physical disabilities.

Download or order resources at vote.nz and we'll send them to you.



Are you eligible to enrol and vote - NZSL

ELECTORAL COMMISSION
TE KAITIAKI TAKE KŌWHIRI

Are you eligible to enrol and vote?

Are you overseas?

SEEFL
Share

Watch on **YouTube**

Frequently Asked Questions

When is election day?

Election day is Saturday 14 October.

When can I vote?

Voting opens in New Zealand on Monday 2 October. The last day to vote is Saturday 14 October.

If you are overseas, you can vote from Wednesday 27 September.

Who can vote in the General Election?

Only people who are correctly enrolled before election day can vote in the General Election.

Who can enrol?

You're eligible to enrol and vote if you are 18 years or older, a New Zealand citizen or permanent resident, and you've lived in New Zealand continuously for 12 months or more at some time in your life.

How do I enrol?

It's easy to enrol online at **vote.nz** using your New Zealand driver licence, New Zealand passport or RealMe verified identity.

You can also enrol or update your details by filling in an enrolment form. Call **0800 36 76 56** or text your name and address to **3676** to have one sent to you.

Once voting starts, you can enrol and vote at the same time at any voting place.

How can I check if I'm enrolled?

You can check your details by calling **0800 36 76 56**, or you can check and update your details online at **vote.nz**

I've changed address. What should I do?

You need to update your enrolment details. You can do that online at **vote.nz**.

I don't want to enrol because my details will be published. Do I have an alternative?

If your safety, or that of your family, will be at risk if your name and address are published, you can apply to go onto the unpublished roll.

What's the difference between the general roll and the Māori roll?

If you're Māori, you choose to go on the general roll or the Māori roll when you enrol for the first time. After that, you can change the type of roll you are on at any time except in the 3 months before an election.

If you are on the general roll you'll vote for a candidate in the general electorate you live in. If you are on the Māori roll you'll vote for a candidate in the Māori electorate you live in. Whichever roll you're on, you choose from the same list of parties for your party vote.

For more information on the Māori Electoral Option, go to **vote.nz**

Where can I vote?

You can vote at any voting place in Aotearoa, but you may need to fill in an extra form if you vote outside your electorate.

What happens when I go to vote at a voting place?

At the voting place, you'll be given a voting paper for the election. On your voting paper for the election, place a tick by the political party you support, and a tick by the name of the person you want to represent your local area. These are your party and electorate votes.

If you haven't voted before, or don't know what to do – don't worry, there will be people there who can help you.

Can I get help to vote if I need it?

You can get help from a friend, family or an electoral official. A support person can come with you when you vote. They can go behind the voting screen with you and can read out the words and information on the voting papers. The support person can also mark the voting papers for you if you ask them to. They can't tell you who you should vote for.

What if I can't get to a voting place at all?

If you can't get to a voting place at all, there are options such as takeaway votes, where someone can pick their papers up for you, or postal votes. Call **0800 36 76 56** or go to **vote.nz** to find out more.

What's happens if I'm overseas at election time?

If you are going to be overseas on election day, you can still vote. From Wednesday 27 September you can download your papers from **vote.nz**, apply for a postal vote, or vote in person at an overseas post. If you'll still be in New Zealand when advance voting opens, it will be easier if you vote before you go.

When will the results be available?

Preliminary results will be available progressively on election night from shortly after 7pm. You can check the election results website: **www.electionresults.govt.nz**. The official results for the general election will be declared on Friday 3 November.



More information

**Find out everything you need to know about enrolling
and voting in the 2023 General Election by:**

visiting **vote.nz**

calling **Freephone 0800 36 76 56**

visiting Facebook at **facebook.com/VoteNZ**

visiting Instagram at **Instagram.com/VoteNZ**