

Schedule E

Overview maps of General and Māori electorates

This schedule provides three national overview maps and three regional overview maps as well as information about other mapping available below.

1. General Electorates North Island – Te Ika-a-Māui
2. General Electorates South Island – Te Waipounamu
3. Māori Electorates / Ngā Taiwhenua Pōti Māori
4. General Electorates Auckland Region
5. General Electorates Wellington Region
6. General Electorates Christchurch Region

Other mapping

Detailed information about the electorate boundaries is available through an interactive map at www.vote.nz.

Three overview maps for the General electorates for the North Island and South Island and the Māori electorates are also available as A1 size maps and will be included with printed copies of this report.

The 2020 electorate boundaries can be compared with the 2014 and 2007 boundaries and local council boundaries using the online [Stats NZ Geographic Boundary Viewer](#).

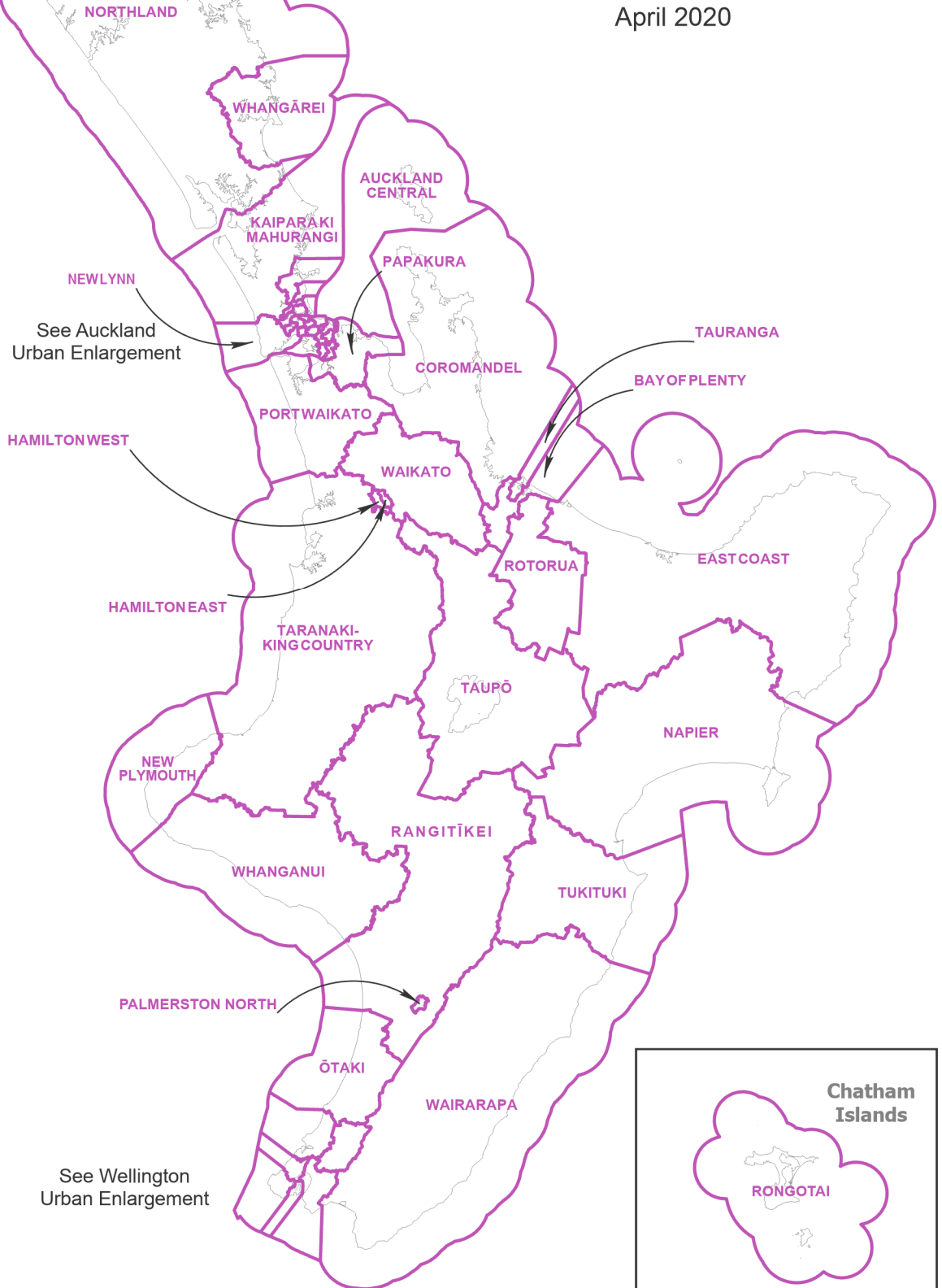
GIS files of the electorate boundaries are available for download in a variety of formats from datafinder.stats.govt.nz.

NORTHLAND

General Electorates North Island Te Ika-A-Māui

As defined by the
Representation Commission
Te Komihana Whakatau Rohe Pōti

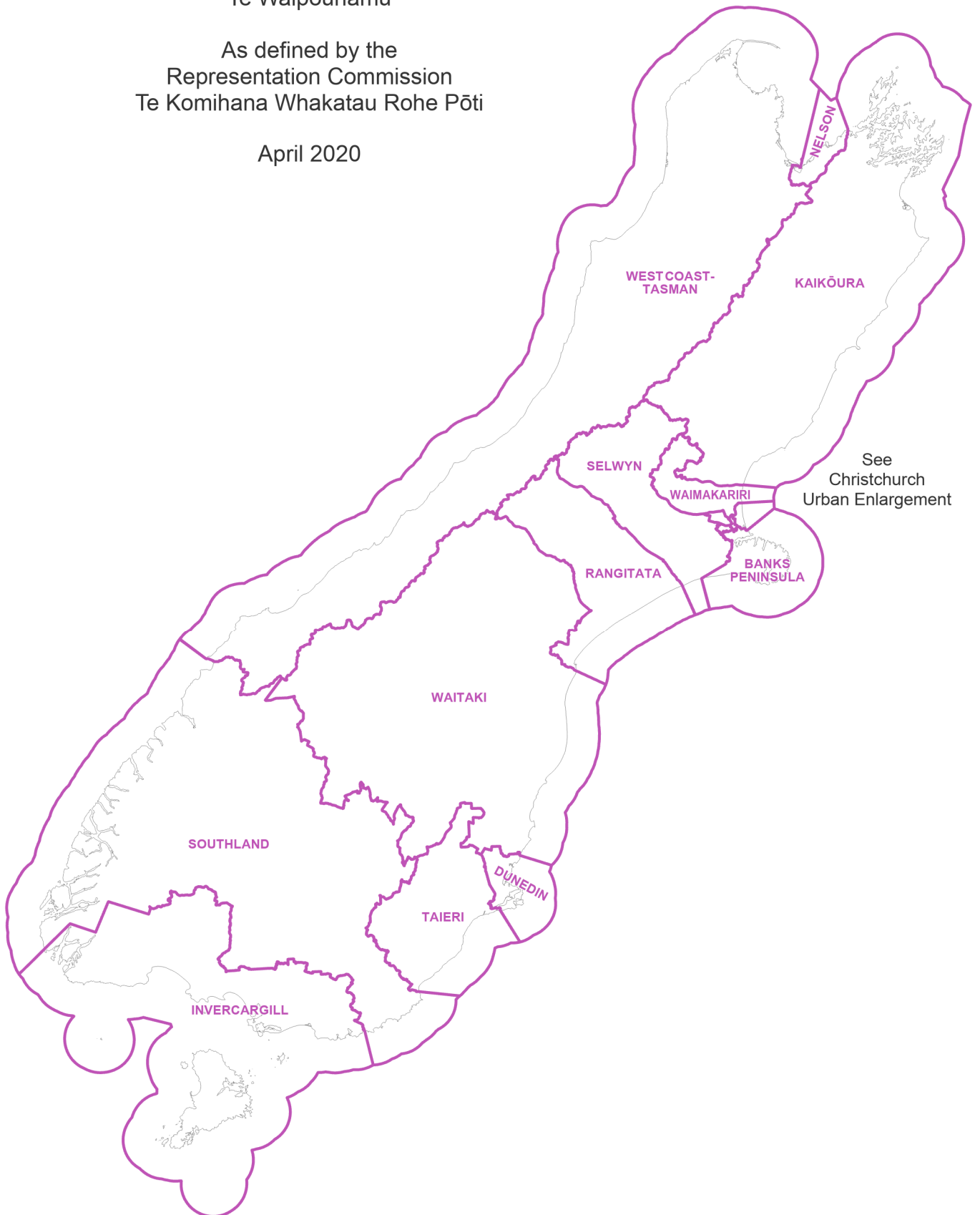
April 2020



General Electorates
South Island
Te Waipounamu

As defined by the
Representation Commission
Te Komihana Whakatau Rohe Pōti

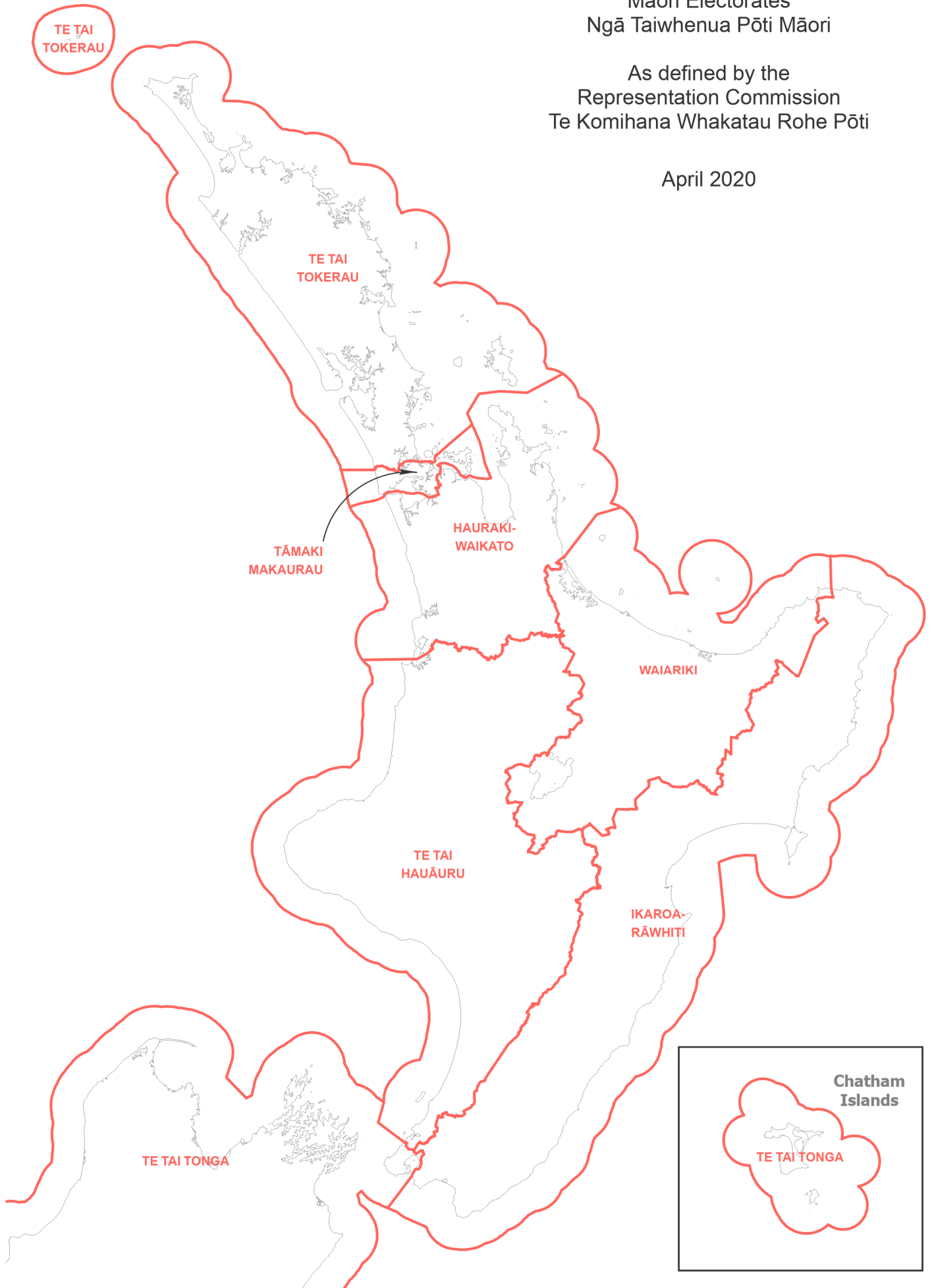
April 2020



Māori Electorates
Ngā Taiwhenua Pōti Māori

As defined by the
Representation Commission
Te Komihana Whakatau Rohe Pōti

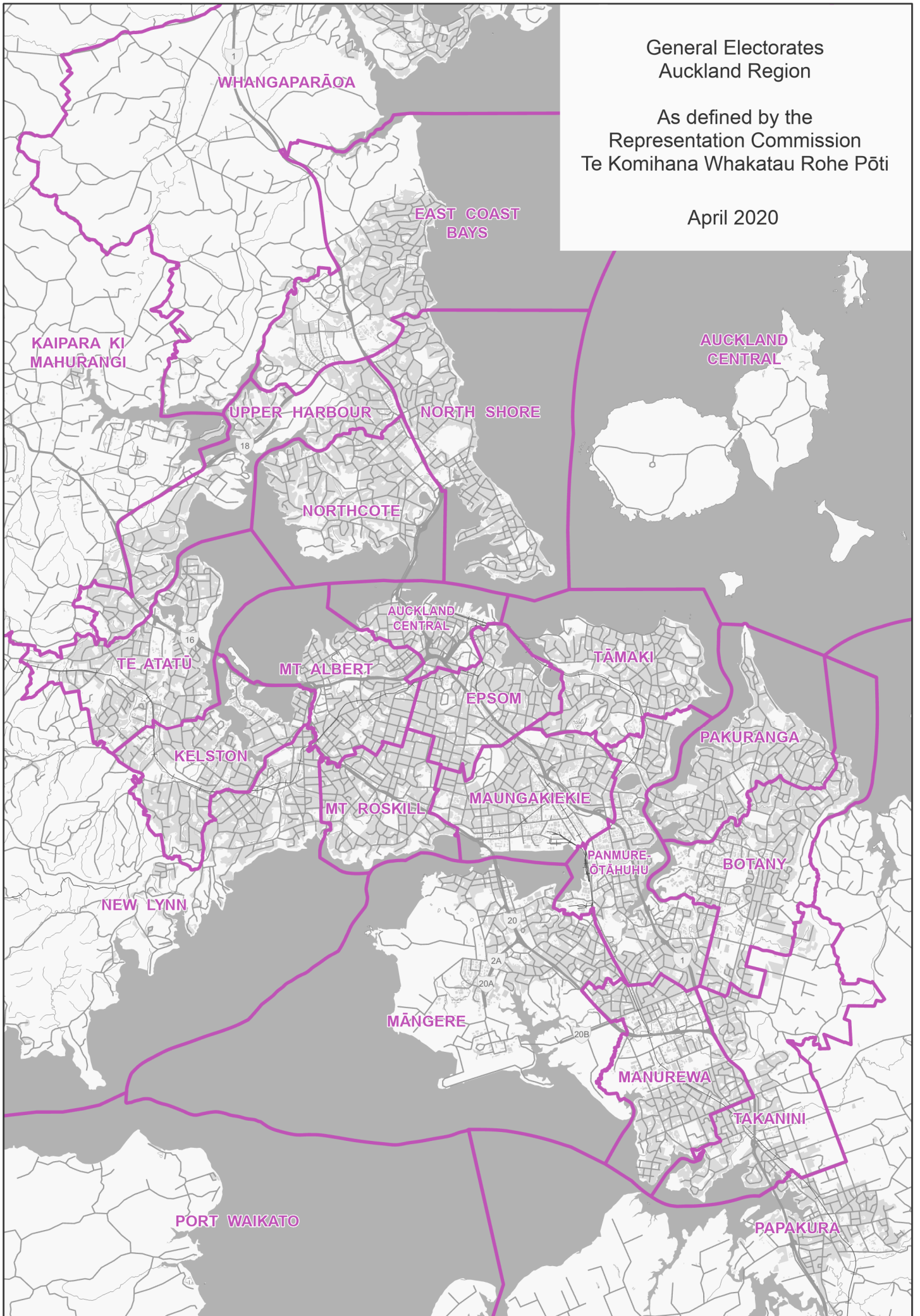
April 2020



General Electorates
Auckland Region

As defined by the
Representation Commission
Te Komihana Whakatau Rohe Pōti

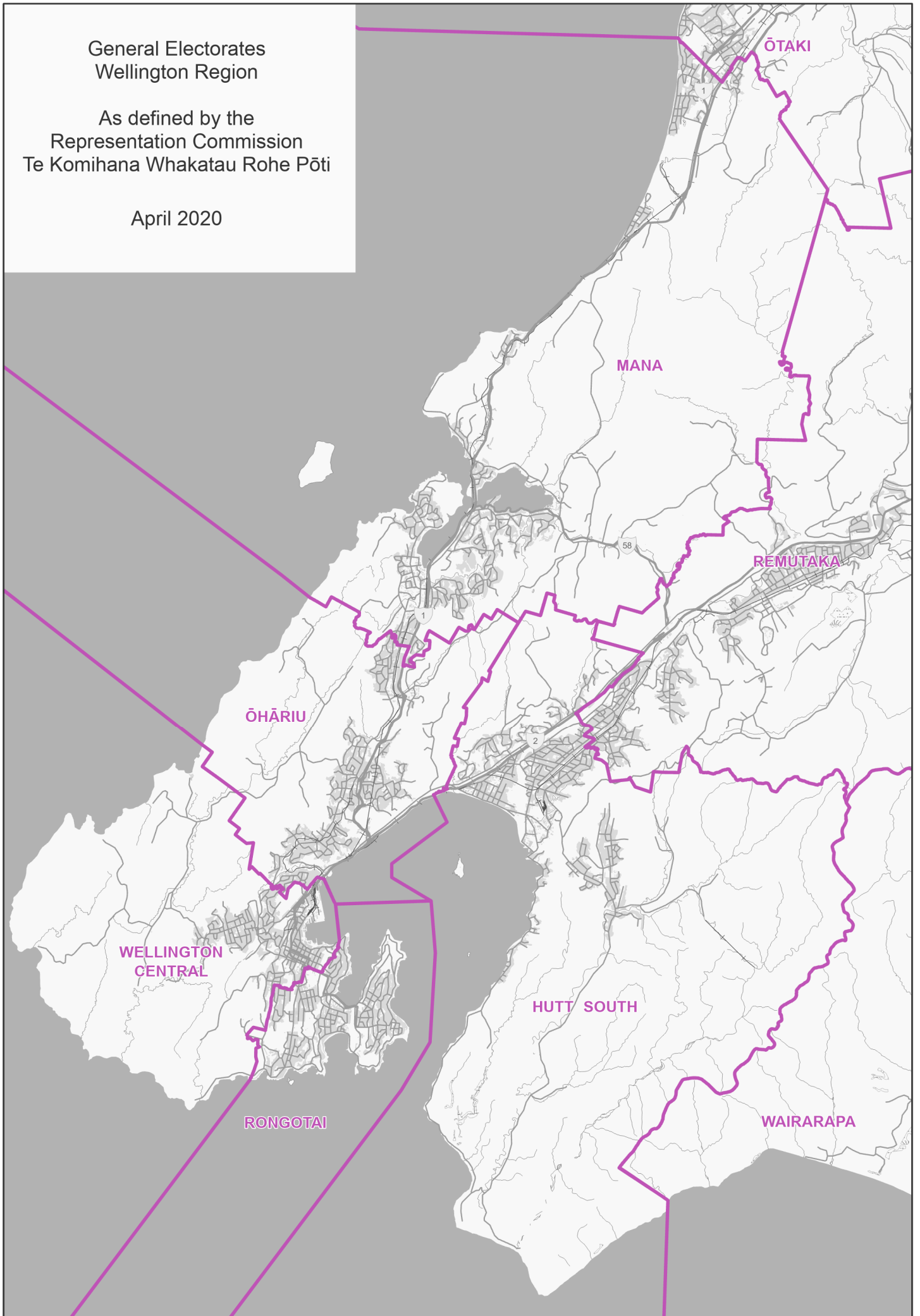
April 2020



General Electorates
Wellington Region

As defined by the
Representation Commission
Te Komihana Whakatauranga Rohe Pōti

April 2020



General Electorates
Christchurch Region

As defined by the
Representation Commission
Te Komihana Whakatau Rohe Pōti

April 2020

