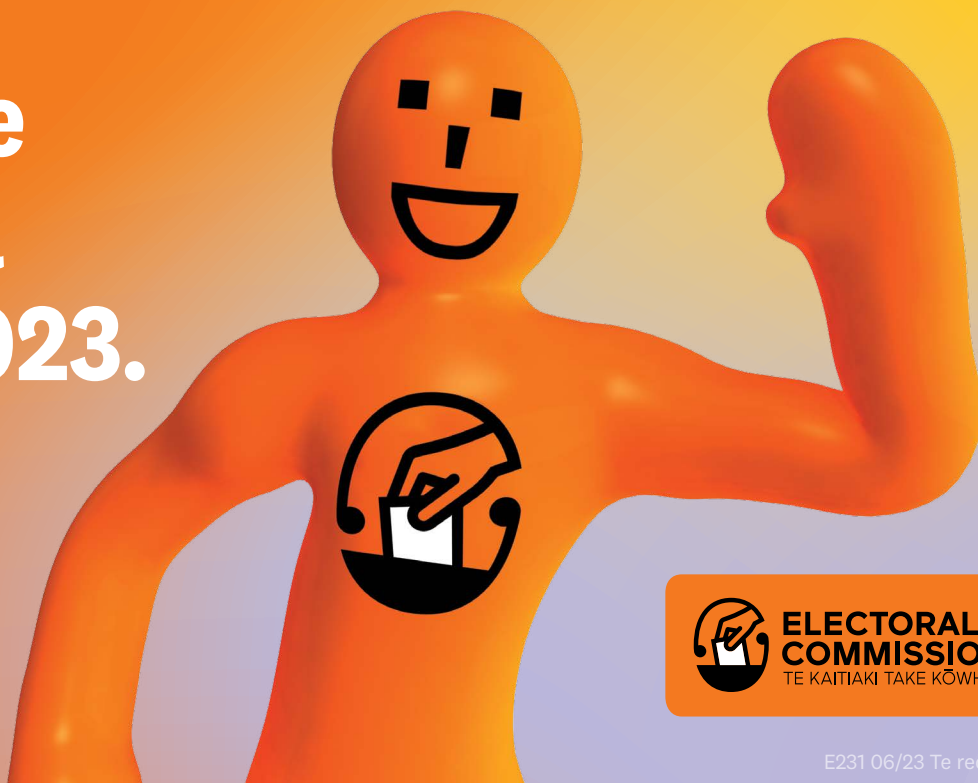


Kia pēnei tō pōti i te Pōtitanga ā-Motu 2023.



E231 06/23 Te reo Māori



Ko ngā tūāhuatanga o ngā ara pōti i 2023

Kia mōhio koe kua rēhita koe, ā, kua tika hoki ōu taipitopito.

E āhei ai koe ki te pōti, me mātua rēhita koe ki te pōti. Ka herea koe e te ture ki te rēhita mehemea kua 18 tau tō pāhake, kua pāhake ake rānei koe, ā, he kirirarau koe nō Aotearoa, he kainoho pūmau rānei koe nō Aotearoa, ā, kua noho koe ki Aotearoa mō tētehi wā roa ake i te 12 marama karapipiti, i roto i ngā tau.



Rēhita ā-ipurangi mai, tirohia ō taipitopito, whakahoungia rānei aua taipitopito

He māmā te rēhita ā-ipurangi, te whakahou rānei i ō taipitopito ki tō raihana hautū waka o Aotearoa, ki tō uruwhenua o Aotearoa, ki tō tuakiri whaimana RealMe rānei.

- Toro mai ki [vote.nz](https://www.vote.nz)
- Waea mai ki **0800 36 76 56**
- Pātuhi utukoretia tō ingoa me tō wāhi noho ki **3676**



Ko tō mōki Pōti Tere

Mehemea kua rēhita koe i mua i te Rātapu te 10 o Hepetema, ka whiwhi koe i tētehi mōki Pōti Tere i te mēra.

Kei roto i tō mōki Pōti Tere ngā pārongo mō te wā pōti me ngā kōwhiringa kaitono e hora ana ki a koe. Kei reira hoki tāu ake kāri Pōti Tere e māmā ake ai te pōti. Ka āhei tonu koe ki te pōti mehemea kāhore i a koe tō kāri, engari ka roa ake peangē te mahi.

Ki te rēhita koe ā muri i te Rātapu te 10 o Hepetema, tatū atu ki te rā pōti, kāhore koe e whiwhi i tō mōki Pōti Tere. Me tuku pōti motuhake koe, me te aha, ka roa ake te mahi.

Ka tuwhera te pōtitanga: 9 karaka i te ata o te
Mane te 2 o Oketopa

Ka kati te pōtitanga: 7 karaka i te pō o te rā pōti,
Hātarei te 14 o Oketopa



Ko ngā wāhi me ngā wā tuwhera o ngā wāhi pōti

Ka āhei koe ki te rēhita, ki te pōti hoki i te Pōtitanga ā-Motu i ngā wāhi pōti katoa, ā te Mane te 2 o Oketopa ki te rā pōti, Hātarei te 14 o Oketopa.

Hei te rā pōti, Hātarei te 14 o Oketopa, ka tuwhera ngā wāhi pōti ā te 9 karaka i te ata tatū atu ki te 7 karaka i te pō.

Mehemea ko te hiahia koe ki ētehi pārongo nō mō ngā wāhi me ngā wā pōti, toro mai ki [vote.nz](https://www.vote.nz), waea mai rānei ki **0800 36 76 56** hei waenga i te Hepetema, ā muri rānei i taua wā.



Mehemea ko te hiahia koe ki ētehi whakamāramatanga nō mō te rēhitatanga me te pōtitanga

- Toro mai ki [vote.nz](https://www.vote.nz)
- Waea mai ki **0800 36 76 56**

Mehemea ka whaihua ēnei whakamāramatanga ki tētehi atu tangata e mōhio nā koe, tēnā, whakamōhiohia atu.

He pārongo i ētehi atu reo, he pārongo tomopai hoki mō te rēhitatanga me te pōtitanga kei [vote.nz](https://www.vote.nz)

Kia pēnei tō pōti

1 Mauria atu tō kāri Pōti Tere

Mauria atu tō kāri Pōti Tere kia māmā ake ai tō pōti. Ka āhei tonu koe ki te pōti mehemea kāhore i a koe tō kāri.



2 Hei te wāhi pōti tētehi tangata hei ārahi i a koe

Ka ārahi ngā kaimahi o te wāhi pōti i a koe ki te haere ki ngā wāhi tika, ki te pōti hoki.



3 Pōti i te pōtitanga ā-motu

I ngā pōtitanga ā-motu, e rua ō pōti – ko tētehi pōti ā-rōpū me tētehi pōti ā-rohe.

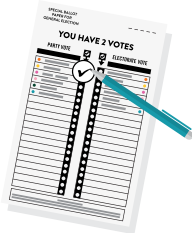
Ko tō pōti ā-rōpū

Ka tukua tō pōti ā-rōpū ki te rōpū tōrangapū e hiahia nā koe ki te tautoko.

Ko te aronga nui o tēnei pōti ko te whakataua i te maha o ngā nohoanga i te Whare Pāremata ka tukua ki ia rōpū. Ka nui ake ngā nohoanga Whare Pāremata ka tukua ki ngā rōpū he nui ake ā rātau pōti ā-rōpū.

Kotahi anake te rārangi o ngā rōpū tōrangapū hei pōti māu, ahakoa kei te rārangi Māori koe, kei te rārangi whānui rānei.

Tuhia ki tō pepa pōti he tohu whakaae ki te taha o te ingoa o te rōpū tōrangapū e kōwhiri nā koe.



Ko tō pōti ā-rohe

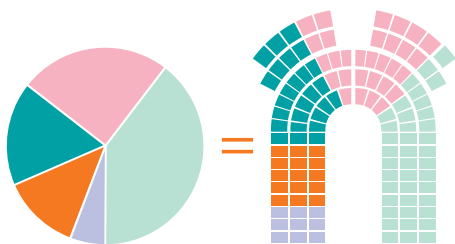
Ka tukua tō pōti ā-rohe ki te tangata e hiahia nā koe hei mema Pāremata (MP) mō te rohe e noho nā koe.

Ka noho hei MP mō tō rohe te tangata he nui katoa ngā pōti ka riro i aia i roto i tō rohe pōti. Hei kanohi ia mō tō rohe i roto i te Whare Pāremata.

Mehemea kei te rārangi Māori koe, ka pōti koe i tētehi kaitono e tū ana i roto i tētehi rohe pōti Māori.

Mehemea kei te rārangi whānui koe, ka pōti koe i tētehi kaitono e tū ana i roto i tētehi rohe pōti whānui.

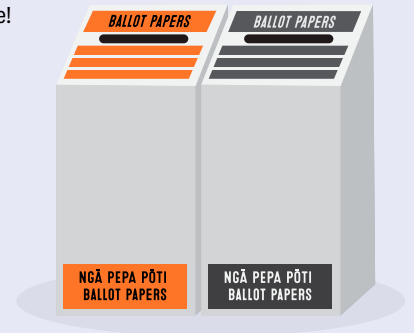
Tuhia ki tō pepa pōti he tohu whakaae ki te taha o te ingoa o te kaitono e tino hiahia nā koe kia tū hei māngai mō tō rohe.



Ko tēnei pānga riterite o ngā pōti ā-rōpū =
Ko taua pānga riterite tonu o ngā nohoanga i te Pāremata

4 Raua atu te pepa pōti ki te pouaka pōti

Kāti, kua tau — kua pōti koe!



Tē taea e koe te tatū atu ki te wāhi pōti?

Mehemea tē taea e koe te haere ki te wāhi pōti – hei tauira, nā tētehi take hauora, nā tō kaumātuatanga, nā tētehi take whaikaha rānei – ka āhei koe ki te tono āwhina. Toro mai ki **vote.nz**, waea mai rānei ki **0800 36 76 56** ki te kōrerorero i ngā ara e wātea ana ki a koe.

Mehemea kei tētehi whare tiaki koe e noho ana, ka toro atu te Kaiwhakahaere ā-Rohe Pōti o te rohe e noho nā koe ki te kaiwhakahaere o tō whare tiaki kia whakaritea ai he ratonga pōti.

Mehemea tē taea e koe te haere ki te wāhi pōti nā tō noho hōhipera, ka āhei tētehi hoa, tētehi whanaunga rānei ki te kawē i ō puka pōti ki a koe, ā te Mane te 2 o Oketopa, ā muri rānei i taua rā.

Te pōti i tāwāhi

E āhei ai koe ki te pōti i tāwāhi, me mātua rēhita koe i mua i te Paraire te 13 o Oketopa i te waenganui pō. Ka āhei koe ki te rēhita, ki te whakahou rānei i ō taipitopito ki **vote.nz**

Ka āhei koe ki te pōti i tāwāhi ā te Wenerei te 27 o Hepetema ki te Hātarei te 14 o Oketopa i te 7 karaka i te pō (hei tā ngā karaka o Aotearoa).

Ko te ara māmā katoa, ko te ara tere katoa hoki ki te pōti mai i tāwāhi he tikiakē i ō puka pōti, ka whakakīia ai, me te tukuatu ki **vote.nz**

Waea mai i tāwāhi: +64 9 909 4182 (ka pā atu peangē ngā utu waea ā-ao)

Waea mai i Aotearoa: 0800 36 76 56

Me āwhina tētehi i a koe ki te pānui, ki te whakakī rānei i ō puka pōti?

Ka āhei tētehi hoa, tētehi whanaunga, tētehi kaimahi pōtitanga rānei ki te āwhina i a koe ki te pānui, ki te whakakī rānei i tō puka pōti. Ka āhei ia ki te:

- haere ki tua i te ārai pōti hei hoa mōu
- pānui ā-waha i ngā kupu me ngā pārongo o te puka pōti
- whakakī i te puka pōti, mehemea ka tonu atu koe kia pērā.

Kāhore e āhei ia ki te ārahi i ō kōwhiringa pōti i te pōtitanga ā-motu.

Mehemea he kāpō koe, he uaua rānei ki a koe te kite, he tūāhuatanga ā-tinana rānei e kore ai e taea e koe tō puka pōti te whakakī takitahi, ka āhei koe ki te pōti mā te ratonga pōti ā-waea.

E āhei ai koe ki te pōti pērā, me rēhita mai ki te ratonga. Waea mai ki **0800 028 028**, ka kōwhiri ai i te kōwhiringa 1 ki te rēhita mai.

Ka āhei koe ki te rēhita mai ā te Mane te 11 o Hepetema ki te Hātarei te 14 o Oketopa i te rānui.

He whakamāratanga nō mō tēnei ratonga kei **vote.nz**