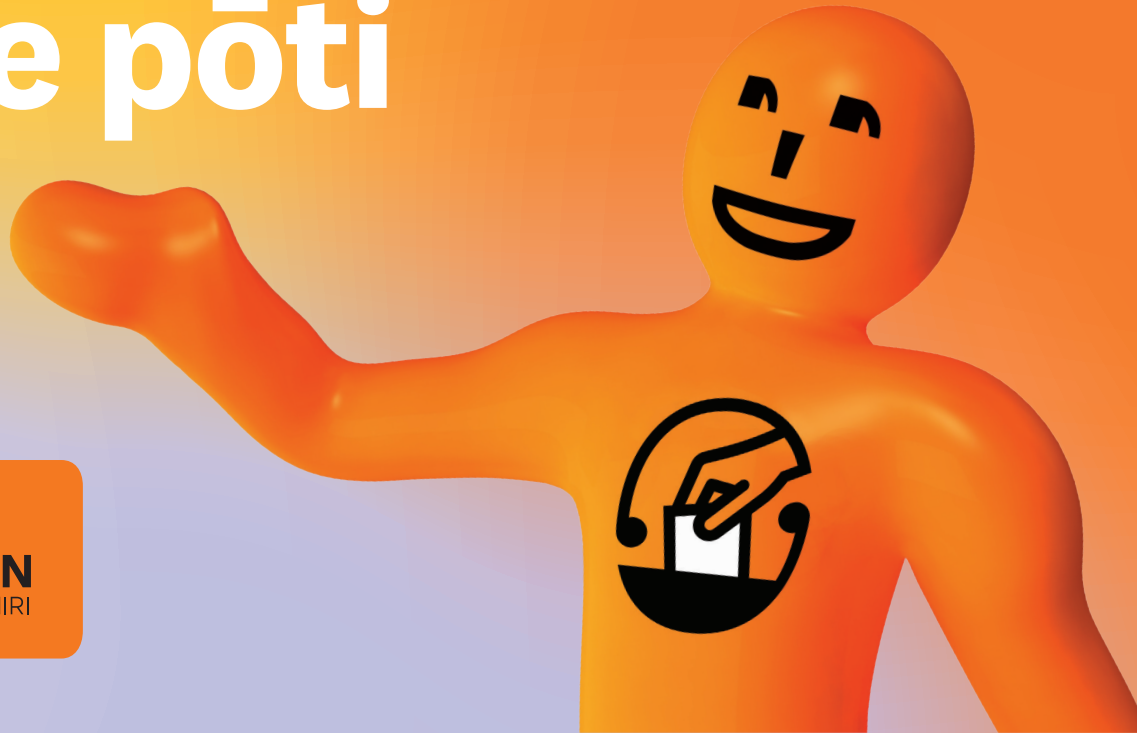


# Kia rite ki te rēhita me te pōti



**ELECTORAL  
COMMISSION**  
TE KAITIAKI TAKE KŌWHIRI

ROE47 NGĀ PUHI NUI TONU 04/2026

## He aha te take me rēhita ki te pōti?

Mena koe e rēhita ana ki te pōti, ka whai reo koe ki ngā pōtitanga ā-motu, pōtitanga ā-rohe, pōtitanga motuhake anō hoki.

Ko ngā pōtitanga he wā whiriwhiri ko wai hei māngai mōu ki Pāremete, ki tō kaunihere rānei, ki ngā take e whai patanga ana ki a koe.

**Kia rāngona tō reo me  
rēhita ki te pōti.**



## Ko wai e āhei ana ki te pōti?

Me rēhita koe mena:

- ko atu i te 18 tau te pakeke, ā
- he uri koe nō Aotearoa, he kainoho rānei mō te pōtitanga te take, ā,
- kua honohono tō noho ki Aotearoa koni atu i te 12 marama te roa i tētahi wā o tō oranga.

He kainoho koe e whai wāhi ana ki te pōti mena koe kei Aotearoa e noho ana, ā, horekau te ture e mea ana kia wehe atu koe hei mea taima. E pā ana hoki tēnei ki te tangata pane uruhenua.

Mena koe he Ahitereiria, Niue, Tokelau, Kuki Airani rānei, e āhei ana koe te rēhita mena kua 12 marama honohono tō noho ki Aotearoa nei.

Mena koe kei tāwāhi e āhei ana koe ki te rēhita mena:

- 18 te pakeke, koni atu, ā,
- kua noho ki Aotearoa mō te 12 marama, koni atu, i tētahi wā o tō oranga, ā,
- he: uri Aotearoa koe, ā, kua noho ki Aotearoa mō tētahi wā i ēnei tau e toru, RĀNEI he kainoho mō te pōtitanga te take, ā, kua noho ki Aotearoa i ēnei marama 12 ka hipa nei.

E āhei ana koe te pōti kia 17 koe.

Kia 18 koe, ka mana noa tō ingoa ki te rēhita, ka rite koe ki te pōti.



## Rēhita ki te pōti mena koe he Māori

Mena koe he uri Māori, ā, ko tō wā tuatahi tēnei ki te rēhita, māu e whiriwhiri ki tēhea rārangi koe noho ai: Te rārangi Māori, rārangi noa rānei.

Ko tō kōwhiringa rārangi ka whakataua:

- ki tēhea rohe pōti koe
- ko wai mā ngā tāngata hei kōwhiringa māu.

Kia rēhita koe, e āhei ana koe te whakawhiti rārangi i te wā ka hiahia, atu:

- i te 3 marama i mua ake i te pōtitanga ā-motu, ā-rohe rānei, e tū nei i ia toru tau
- i mua i pōtitanga motuhake mena taua tīninga ka neke i koe ki te rohe e tū nei te pōtitanga motuhake.

### He aha ngā pānga o tō kōwhiringa rārangi ki a koe?

I te wā o te pōtitanga ā-motu, ki te whiriwhiri koe i te rārangi noa, ka pōti koe mō ngā tāngata noa o tō rohe. Mena koe ka kōwhiri i te rārangi Māori, ka pōti koe mō tētahi o te rohenga Māori. E āhei ana koe te pōti mō ngā pāti katoa, ahakoa kei tēhea rārangi koe.

Ko te kōwhiringa rārangi, tēnā pea ka whakaawe ko wai ngā tāngata hei pōtinga mōu ki ngā pōtitanga ā-rohe. Ki te kōwhiri koe i te rārangi Māori, ā, he wāhanga Māori kei tō rohe kaunihere, ka pōti koe mō ngā tāngata o taua wāhanga Māori. Ki te kōwhiri koe i te rārangi noa, ka pōti koe mō ngā tāngata o taua wāhanga noa rā.



## E āwangawanga ana koe ki tō haumarutanga?

Mena koe e āwangawanga ana ki haumarutanga ou, o tō whānau rānei, e āhei ana koe te tono kia noho koe ki te rārangi muna. Ka puritia munatia ō taipitopito, ka kore e tukuna ki a wai ake.

Mena koe kei te rārangi muna, ka kore tō ingoa e kitea ki ngā rārangi ingoa, ā, ka kore koe e āhei titiro, whakahou rānei i ō taipitopito ki te ipurangi. Kia pōti koe me whai koe i te pōti motuhake me te whakakī puka tāpiri i te taha o tō puka pōti hei whakaū i te rohe pōti e rēhita nei koe ki te pōti.

Haere ki **vote.nz**, waea rānei ki **0800 36 76 56** mō ētahi atu whakamāramatanga me tētahi puka tono.



## Me pēhea taku rēhita?

He māmā te rēhita, te whakahou rānei i ō taipitopito. E āhei ana koe te:

- rēhita ā-ipurangi ki **vote.nz** mā te whakamahi i tō raihana taraiwa Aotearoa, puka uruwhenua Aotearoa, RealMe rānei
- waea kore utu ki **0800 36 76 56** ka pātai kia tonoa he puka rēhita ki a koe.

Kia oti, waitohungia me te whakahoki ki a mātou. Kia rēhita koe, ka noho tō ingoa ki te rārangi pōti. Te rārangi pōti he rārangi ingoa mō te hunga e āhei ana te pōti. Mātua me noho tō ingoa ki te rārangi pōti ka āhei koe te pōti.

Me whakahou koe i ō taipitopito ia taima e neke whare ai koe.

Mātua kia homai e koe tō īmera me tō nama waea o te wā ki a mātou e pai ai tā mātou whakapā ki a koe mō te rēhita me te pōti.

Kia rēhita tuatahi koe, kia whakahou rānei i ō taipitopito, ka tonoa he reta, he īmera rānei ki a koe ki te pātai mena e tika ana ō taipitopito.



## Hiahia āwhina ki te rēhita?

E āhei ana koe te pātai ki tētahi e mōhio nei koe, pēnei i te hoa, tētahi o te whānau, hei āwhina i a koe ki te whakakī i te puka rēhita, ki te whakakī rānei mōu.

Me waitohu koe i te puka.

Mena koe e mōhio ana ki tētahi kāhore e taea te whakakī me te waitohu i te puka nā tētahi mate, tēnā pea ka āhei koe te āwhina.



## He whakamārama anō?

Mō ētahi atu whakamārama mō te rēhita me te pōti:

- toro ki **vote.nz**
- waea **0800 36 76 56**

Ngā whakamārama mō te rēhita me te pōti e iri ana ki ngā reo maha, ki ngā whakatakotoranga maha ki **vote.nz**

